

Tournament Timetable

8:00

Doors Open

The day begins by welcoming fans to sumo with the beating of taiko drums.



Around 15:45

Makuuchi Entrance

Makuuchi (top division) wrestlers form a vivid circle in the ring in decorative *kesho-mawashi* and turn to face the crowd.



Around 8:30

Preliminary Bouts

Bouts held between sumo wrestlers yet to be officially ranked.
*Held from Day 3 onwards.



Around 15:50

Yokozuna Entrance

Yokozuna champions make a ceremonious entrance into the ring accompanied by two *makuuchi* wrestlers.



Around 8:40

Jonokuchi/Makushita Bouts

Bouts held between *jonokuchi* (lowest division) wrestlers and then *makushita* (junior grade division) wrestlers.
*Bouts commence at 10:00 AM from Day 13.



Around 16:15

Makuuchi Bouts

Top-division wrestlers best one another until the final bouts commence between the top-ranked wrestlers around 17:30.



Around 14:20

Juryo Entrance

Juryo wrestlers enter the ring dressed in *kesho-mawashi*. Wrestlers at this rank and above are considered full-fledged sumo professionals.



Around 18:00

Bow-twirling Ceremony (Yumitori-shiki)

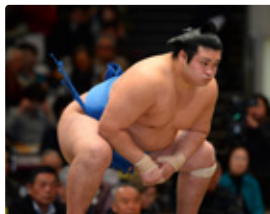
Wrestler twirls a Japanese bow in a centuries-old tradition that began Each day a low-ranking with bestowing a bow upon the sumo champion.



Around 14:40

Juryo Bouts

Juryo wrestlers range from young *yokozuna* hopefuls to veterans of the sumo circuit. A brief intermission known as *nakairi* follows.



Ending Drums (Uchidashi)

Taiko drums resound from the Kokugikan's turret to conclude the day's festivities and encourage fans to come again.
*Taiko is not performed on the final day of the tournament.

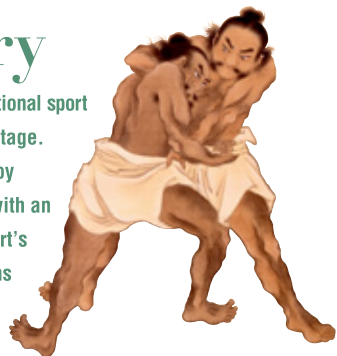


*Information current as of March 2014. Changes may occur.

History

Sumo—Japan's national sport and traditional heritage.

Spectators can enjoy sumo much more with an insight into the sport's history, which spans over 1,500 years.



The origins of sumo spring from mythological contests of strength and wrestling bouts in the audience of the imperial court, as recorded in two of Japan's oldest extant chronicles, the *Kojiki* and *Nihon Shoki*. Originally held as an annual ceremony to predict the harvest, sumo became a 300-year long court tradition.

From the Kamakura period (1185-1333) well into Japan's medieval period of upheaval, sumo flourished as a way for samurai to hone their skills in combat.

Eventually, professional wrestlers appeared among wandering samurai and strongmen in the relative peace of the Tokugawa shogunate (1603-1868), which officially

Ritual

Originally a sacred Shinto rite, sumo esteems the beauty of form and etiquette of ceremony in a fair competition of skill and strength. Each ritual performed in the ring (*dohyo*) signifies a specific offering to the gods. Here we introduce a few of those rituals.

● **Salt Purification (Kiyome no shio)**

Wrestlers scatter salt on the ring to purge it of any malicious energy and thereby cleanse it.

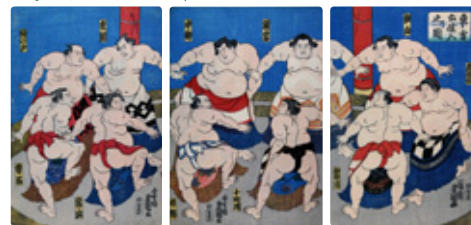


commissioned sumo tournaments to be held regularly throughout the year during the mid-Edo period.

Throughout sumo's long history, its rules and traditions have been shaped, refined, and stylized into the Japanese sport you see today.

These traditions have gone unchanged since the Edo period, from the *dohyo-iri* (wrestlers' entrance into the ring) and *banzuke-hyo* (official rankings of wrestlers), to wrestlers' *kesho-mawashi* (ceremonial loincloths), *chonmage* haircuts, and elegant kimono. Come experience 1,500 years of sumo at the Kokugikan!

An ukiyo-e depiction of wrestlers entering the ring in a ceremony called *dohyo-iri*, which has been performed in the same manner for centuries.



● **Bow-twirling Ceremony (Yumitori-shiki)**

The bow-twirling ceremony concludes each day's bouts and is said to have begun hundreds of years ago, when a bow was bestowed upon the champion. Wrestlers would perform a dance incorporating the bow to show their gratitude.



GRAND SUMO RYOGOKU KOKUGIKAN HANDBOOK

ENGLISH EDITION

英語版 満喫入門

2014 EDITION





KOKUGIKAN ARENA GUIDE

Eat, drink, and explore everything the Kokugikan has to offer!

There is a lot more to see in the Kokugikan than just sumo bouts.
Go for a stroll in between bouts with this map in hand!

*This map is specifically designed for the duration of the tournament.



A South Gate

See wrestlers up close as they enter the arena from the South Gate. The most popular makuuchi wrestlers arrive starting around 2:00 p.m.

*Guests can re-enter the Kokugikan from this gate.



B Chanko Stew

Chanko is an incredibly nutritious stew eaten at sumo stables. Practice and chankonabe are the two ingredients that go into the massive build of sumo wrestlers.



C Exhibition Room

Here you can delve deep into the long history and culture of sumo free of charge. A new exhibition is held every two months.

Photography prohibited.

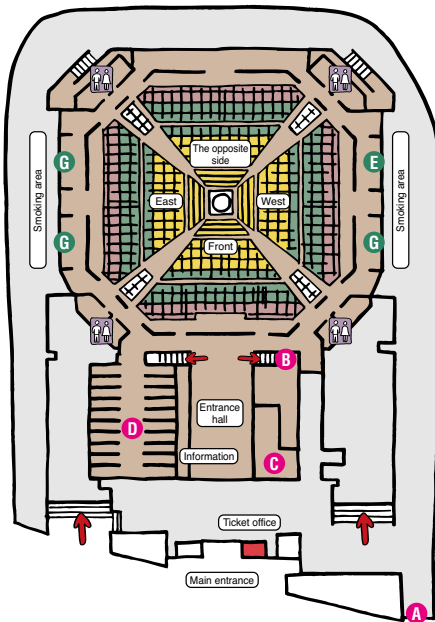


D Sumo Annaijo Entrance

Twenty historical establishments run by individual families are marked by elegant red lanterns and stand side by side on each side of the walkway. They arrange seats, souvenirs, and refreshments. They are available even without advance reservations.

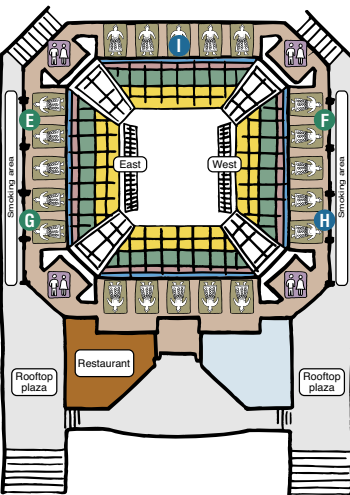
1F

- Box seat A (rows 1-8)
- Box seat B (rows 9-12)
- Box seat C (rows 13-15)



2F

- Chair seats A (rows 1-6)
- Chair seats B (rows 7-11)
- Chair seats C (rows 12-13)
- Non-reserved seats (row 14)



E Food and Drink Establishments

Beer, snacks, and original bento boxed lunches only available at the Kokugikan are sold here. The Kokugikan's famous yakitori can also be purchased here. There is nothing quite like watching sumo with a beer in one hand and skewered yakitori in the other.



F Yakitateya

Yakitateya is a confectionery shop and snack stand selling takoyaki, taiyaki, and other Japanese treats. Takoyaki is a ball-shaped, savory snack filled with minced octopus while taiyaki is a type of pancake often stuffed with sweetened red bean paste or custard.



G Sumo Gift Shop

This is where the only official sumo goods are sold. Posters and pamphlets chockfull of photographs are top-selling items! And also available are many very Japanese products such as referee fans and folding fans!



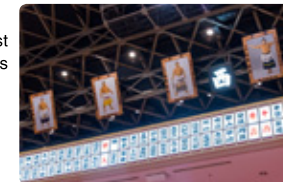
H Café Stand

The café stand on the second floor of the West offers refreshments such as coffee, draft beer, popcorn, and french fries. Around 80% of customers line up for the famous soft serve ice cream.



I Framed Portraits of Champions

Portraits of the champions from the past thirty-two tournaments adorn the rafters and envelope the entire arena.



TICKET INFORMATION

Seating Types (Tokyo)

1F Seat Selection	Prices
Box seats A (row 1-8)	11,700 yen
Box seats B (row 9-12)	10,600 yen
Box seats C (row 13-15)	9,500 yen

2F Seat Selection	Prices
Chair seats A (rows 1-6)	8,500 yen
Chair seats B (rows 7-11)	5,100 yen
Chair seats C (rows 12-13)	3,800 yen
Non-reserved seats (row 14)	2,200 yen

See the seating color chart on the reverse side.

Tickets



The place to buy tickets to the Tokyo Tournament in English.



Travel companies (Tokyo, Osaka, Nagoya, Fukuoka)
<http://www.jtb-sunrisetours.jp/>

Sunrise Tours offers a guided tour of the Tokyo Tournament in English.

Apply online today in English at the URL above!

Call: 0800-888-5454 toll free (10:00am-5:30pm)
Local Call: 03-5796-5454 (8:00am-8:00pm)

SCHEDULE

A more detailed schedule is available here:
<http://www.sumo.or.jp/eng/ticket/index.html>

Much more to sumo than just tournaments!
See other events here!

@FUKUOKA
November 9-23



@OSAKA
March 9-23



@NAGOYA
July 13-27



@TOKYO
January 12-26
May 11-25
September 14-28

Official Sumo Goods Take sumo home with the perfect souvenir!

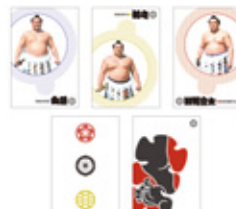
*For sale at the Entrance Hall on the first floor. 12:00-16:00.



Hand Towels ¥500



Coasters ¥500



Postcards ¥500

SUMO INFORMATION (TOKYO)

Re-entry

Customers are allowed re-entry once after going through the proper procedures at the South Gate. Make sure to hold on to your ticket stub.

Information Desk

The information desk is on the left as you come through the entrance. English-speaking staff can guide you to your seat and provide other assistance.

Website

(Japan Sumo Association Official Website)
<http://www.sumo.or.jp/eng/index.html>

English Commentary on Loaned Radios

You can rent a radio to listen to English language commentary on the sumo bouts: FM78.3MHz, 16:00-18:00.

The rental fee is 100 yen and a deposit of 2,000 yen is required. The deposit is returned once the radio has been returned in working condition. We ask that the radio be returned by the given time.

*The time of the broadcast given is tentative. It is subject to change and discontinuation.

Official Sumo Association Twitter & USTREAM

Official Twitter ID @sumokyokai

Same-day ticket information on Twitter!

Follow us on Twitter to get the latest info on sumo tournaments, tickets, and trivia straight from the Kokugikan.



USTREAM

Broadcasts of Grand Sumo matches are available on Ustream (pay-per-view).

Official Nihon Sumo Kyokai Ustream Channel URLs

<http://www.ustream.tv/Sumo-Seasonal> (full 15 day ticket code)

<http://www.ustream.tv/Sumo-Daily> (1 day ticket code)

*Archive videos are available. Please check fees for PPV on Ustream channels above.

*Information current as of March 2014. Changes may occur.